

CT (Lux) Global Focus

At a glance

A best ideas global equity fund that invests in quality companies with durable competitive advantages and the ability to generate strong and sustainable returns.

Investment objective & policy

To provide long-term capital growth and outperform the MSCI AC World Index by investing in a concentrated and actively managed portfolio of global equities.

In line with its active management strategy of holding a small number of investments, portfolio holdings may deviate significantly from those of the index while there is also the flexibility to invest in off-benchmark companies.

Risks

This fund is suitable for investors who can tolerate high levels of risk and volatility and have a long-term investment horizon. Investors could lose some or all their capital and should read the Prospectus for a full description of all risks.

Investment risks: Investment in equities, portfolio concentration and currencies.

“We seek companies with a competitive advantage, strong cash flow generation and the ability to maintain pricing. By taking a global approach, we are not restricted by increasingly artificial regional boundaries and can invest in truly the best companies across the globe.” – **David Dudding**

Key facts

Fund inception date: 31 March 2013

Typical fund holdings: 30-50 companies

Fund size: \$4.5 billion (as at 31.12.2024)

SFDR: Article 8*



David Dudding
Portfolio Manager
(since March 2013)



Alex Lee
Portfolio Manager
(since July 2023)

Key reasons to invest

- 1 Focus on quality companies with durable competitive advantages.
- 2 Concentrated 30-50 stock portfolio unconstrained by sector and region.
- 3 Stock selection drives outperformance in both rising and falling markets.

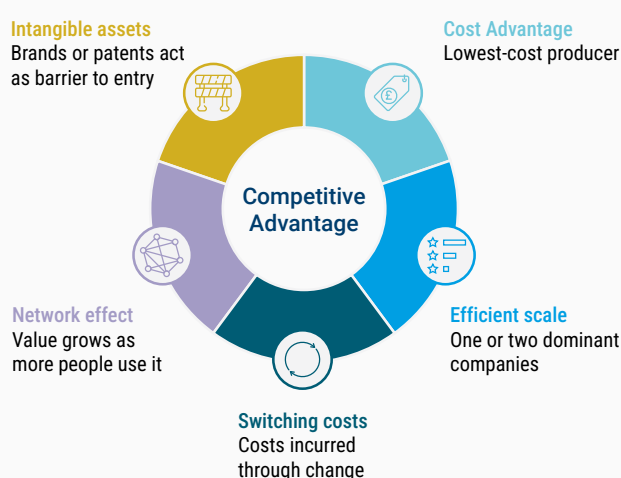
*The fund promotes environmental or social characteristics under Article 8 of the EU Regulation 2019/2088 on sustainability-related disclosures in the financial services sector (SFDR). The decision to invest in the promoted fund should also take into account all the characteristics or objectives of the promoted fund as described in its prospectus. The fund's sustainability related disclosures can be found on our website columbiathreadneedle.com.

Investment approach

The ability of quality companies to sustain high returns on capital and above-average growth is often underestimated, meaning that potential long-term winners trade at a discount to their intrinsic value. We search for quality stocks which have durable competitive advantages alongside robust business models, and therefore strong and sustainable long-term growth potential. The global equities team thoroughly analyses both company fundamentals and industry prospects. We use a research framework to identify the source and durability of companies' with ESG analysis central to this approach.

We work closely with our regional equity, global central research and responsible investment teams across the globe to build a high conviction, best ideas portfolio of some of the world's best quality companies. We are not simply looking for companies with the highest returns, but also ones where they are either stable or improving and are sustainable. As we take a 'go anywhere' approach, stock selection drives sector and regional weightings, and we believe our focus on businesses with strong fundamentals drives outperformance across a range of market conditions.

How we identify a company's edge



Industry structure

- Porter's 5 Forces to assess competitive intensity
- Prefer consolidated / consolidating industries
- Impact of regulation and secular themes

Competitive advantage

- Focus on understanding source and sustainability
- Established and / or improving
- All holdings will display one or more

ESG

- Integrated into research process
- Determinant of company quality
- Measure of risk / Informs opportunity
- Active engagement



To find out more visit columbiathreadneedle.com



Important information: Your capital is at risk. This financial promotion is issued for marketing and information purposes only by Columbia Threadneedle Investments.

The Fund is a sub-fund of Columbia Threadneedle (Lux) I, a Luxembourg domiciled investment company with variable capital ("SICAV"), managed by Threadneedle Management Luxembourg S.A.

The SICAV's current Prospectus, the Key Investor Information Document (KIID)/Key Information Document (KID) and the summary of investor rights are available in English and/ or in local languages (where applicable) from the Management Company Threadneedle Management Luxembourg S.A., International Financial Data Services (Luxembourg) S.A., your financial advisor and/ or on our website www.columbiathreadneedle.com. Threadneedle Management Luxembourg S.A. may decide to terminate the arrangements made for the marketing of the SICAV. Pursuant to article 1:107 of the Act of Financial Supervision, the sub-fund is included in the register that is kept by the AFM. Past performance is calculated according to the BVI method in Germany.

These documents are available in Switzerland from the Swiss Paying Agent CACEIS Investor Services Bank S.A., Esch-sur-Alzette, Zurich Branch, Bleicherweg 7, CH 8027 Zurich.

This material should not be considered as an offer, solicitation, advice or an investment recommendation. An investment may not be suitable for all investors and independent professional advice, including tax advice, should be sought where appropriate. This communication is valid at the date of publication and may be subject to change without notice. Information from external sources is considered reliable but there is no guarantee as to its accuracy or completeness.

In Spain, Columbia Threadneedle (Lux) I is registered with the CNMV under No. 177. The Fund is a non-Spanish collective investment scheme duly registered with the CNMV for marketing in Spain. The fund should be subscribed to through locally authorised appointed distributors. Investors must read the relevant Prospectus and KID for each fund they want to invest before subscribing. All other statutory documentation, as well as the NAV can be obtained from www.columbiathreadneedle.com.

In the EEA and Switzerland: Issued by Threadneedle Management Luxembourg S.A. registered with the Registre de Commerce et des Sociétés (Luxembourg), Registered No. B 110242, 6E, route de Trèves, L-2633, Senningerberg, Grand Duchy of Luxembourg. In the UK: Issued by Threadneedle Asset Management Limited. Registered in England and Wales, No. 573204. Registered Office: 78 Cannon Street, London EC4N 6AG, United Kingdom. Authorised and regulated in the UK by the Financial Conduct Authority. In the Middle East: This document is distributed by Columbia Threadneedle Investments (ME) Limited, which is regulated by the Dubai Financial Services Authority (DFSA). For Distributors: This document is intended to provide distributors with information about Group products and services and is not for further distribution. For Institutional Clients: The information in this document is not intended as financial advice and is only intended for persons with appropriate investment knowledge and who meet the regulatory criteria to be classified as a Professional Client or Market Counterparties and no other Person should act upon it.

This document may be made available to you by an affiliated company which is part of the Columbia Threadneedle Investments group of companies: Columbia Threadneedle Management Limited in the UK; Columbia Threadneedle Netherlands B.V. in the EEA. Certain funds and/or share classes may not be available in all jurisdictions.

© 2025 Columbia Threadneedle. All rights reserved. Columbia Threadneedle Investments is the global brand name of the Columbia and Threadneedle group of companies.

CTEA7502970.1 | WF2780857 (Valid from 01.25 to 12.25)